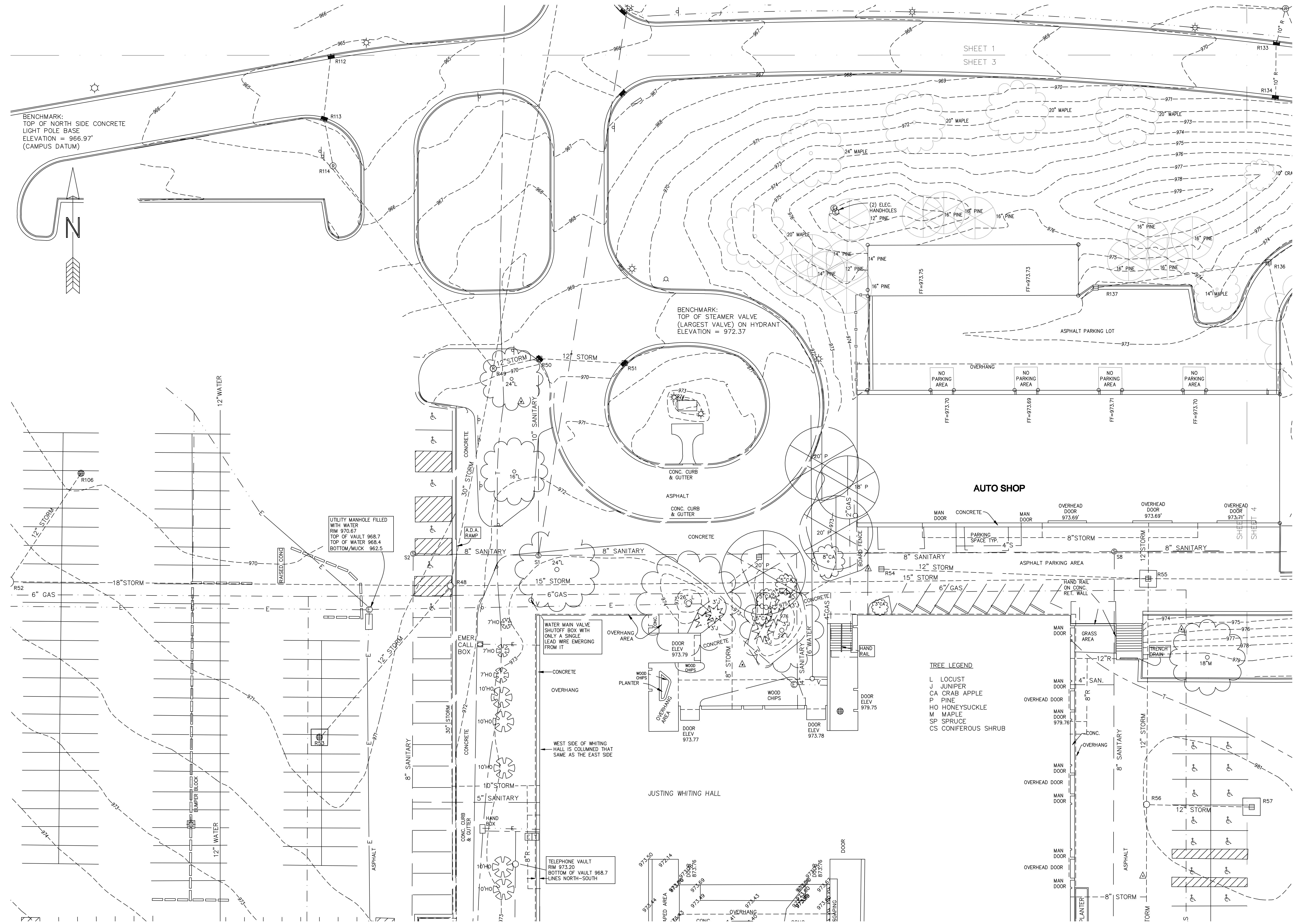
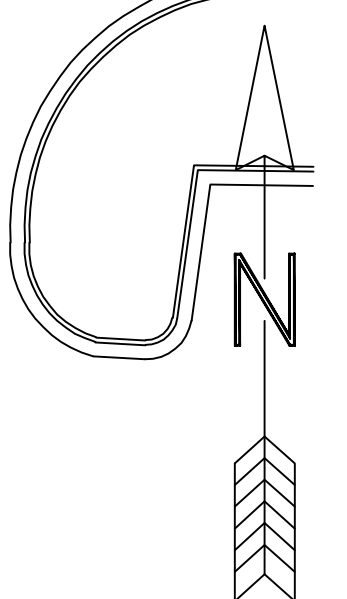


BENCHMARK:  
TOP OF NORTH SIDE CONCRETE  
LIGHT POLE BASE  
ELEVATION = 966.97'  
(CAMPUS DATUM)



BENCHMARK:  
TOP OF STEAMER VALVE  
(LARGEST VALVE) ON HYDRANT  
ELEVATION = 972.37

UTILITY MANHOLE FILLED  
WITH WATER  
RIM 970.87  
TOP OF VAULT 968.7  
TOP OF WATER 968.4  
BOTTOM/MUCK 962.5

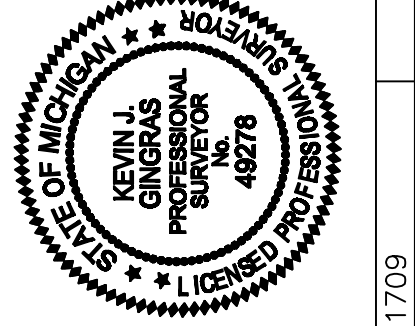
WATER MAIN VALVE  
SHUTOFF BOX WITH  
ONLY A SINGLE  
LEAD WIRE EMERGING  
FROM IT

TELEPHONE VAULT  
RIM 973.20  
BOTTOM OF VAULT 968.7  
LINES NORTH-SOUTH

- TREE LEGEND**
- L LOCUST
  - J JUNIPER
  - CA CRAB APPLE
  - P PINE
  - HO HONEYSUCKLE
  - M MAPLE
  - SP SPRUCE
  - CS CONIFEROUS SHRUB

MEST SIDE OF WHITING  
HALL IS COLUMNED THAT  
SAME AS THE EAST SIDE

**Arbor Land  
Consultants, Inc.**  
Professional Land  
Surveyors  
2936 Madrono Ct.  
Ann Arbor, MI 48106  
Tel 1-734-689-2861  
Fax 1-734-689-2861  
DATE: 1-20-2009



CLIENT: JACKSON COMMUNITY COLLEGE  
**TOPOGRAPHIC SURVEY**  
JACKSON COMMUNITY COLLEGE  
A PART OF SECTIONS 34 & 35,  
T3S, R1W, SUMMIT TOWNSHIP,  
JACKSON COUNTY, MICHIGAN.  
JOB No. 11709 SHEET 3 OF 5  
SCALE 1 INCH = 20 FEET

- SECTION CORNER**
- FOUND IRON PIPE
  - FOUND IRON ROD
  - SET IRON PIPE
  - SET IRON NAIL
  - FOUND MAG NAIL
  - CONTROL POINT
  - MEASURED DIMENSION
  - RECORDED DIMENSION
  - SURFACE FLOW
- WATER MANHOLE**
- WATER HYDRANT
  - GATE VALVE
  - BEEHIVE CATCH BASIN
  - CURB CATCH BASIN
  - STORM MANHOLE
  - CULVERT / END SECTION
  - SANITARY MANHOLE
  - LIGHT POLE
  - UTILITY RISER
  - TELEPHONE RISER
  - GAS MAIN RISER
- ELECTRIC LINE**
- GAS MAIN
  - WATER MAIN
  - STORM LINE
  - SANITARY LINE
  - CABLE TV LINE
  - PHONE LINE
  - CHAIN LINK FENCE
  - WOOD FENCE
  - BARBED WIRE FENCE

THE UNDERGROUND UTILITIES SHOWN  
ON THESE DRAWINGS ARE THE RESULT OF  
SURVEY INFORMATION AND EXISTING  
DRAWINGS. THE SURVEYOR MAKES NO  
WARRANTY AS TO THE ACCURACY OF  
UTILITIES SHOWN COMPRISE ALL SUCH  
UTILITIES IN THE AREA, EITHER IN  
SERVICE OR ABANDONED. THE  
SURVEYOR DOES NOT WARRANT THAT  
UTILITIES SHOWN ARE IN THE EXACT  
LOCATION AS SHOWN OR THAT THEY ARE  
AS ACCURATELY AS POSSIBLE FROM  
THE INFORMATION PROVIDED. THE  
SURVEYOR HAS NOT PHYSICALLY LOCATED  
THE UNDERGROUND UTILITIES OTHER THAN

